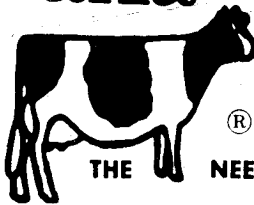


aAa



SIRE THE NEED

HOME OFFICE: PLOVER, IOWA 50573

Used By Dairymen Since 1950

Since 1950, dairymen have used analysis, as developed under Trade Mark "aAa", to determine the mating required to produce offspring with desired qualities.

These dairymen have bred cows to average 50 pounds of milk per day of life with bulls used by "aAa" numbers on cows also analyzed by "aAa" procedure.

For this performance, cows can possess no physical problems that prevent milk production, regular breeding, calving ease, healthy udder and efficient legs.

aAa NUMBERS SHOW THESE QUALITIES FROM LEFT TO RIGHT

#1 (DAIRY)



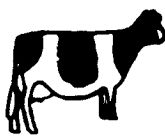
More milk for size. Fast milk let down. More will to milk.

#2 (TALL)



Faster growth. More size. Convenient handling and milking.

#3 (OPEN)



Room for udder. Easy walking, breeding and calving. Long life.

#4 (STRONG)



Less trouble. Healthy reproduction, lungs, udder, feet and legs.

#5 (SMOOTH)



Less injury to bones and teats. Ease of milking. Less awkward.

#6 (STYLE)



Less foot trimming. Higher sale and show value. More pleasure.

FOR A BULL - IN THE ORDER HE CAN BEST SIRE THEM

FOR A COW - IN THE ORDER SHE NEEDS THEM MOST

EXAMPLES: 165234 or 243156 or 315246 etc

EXAMPLES: 243165 or 513642 or 651234 etc

USE A BULL WHO SIRES WHAT THE COW NEEDS

aAa NUMBERS HELP PREVENT THESE PROBLEMS

	#1	#2	#3	#4	#5	#6
HEAD	Bully	Short	---	Small	Narrow	Plain
NECK	Short	Thick	---	---	---	U Neck
CHEST	---	---	---	Shallow	Narrow	---
FORELEGS	Buckled	Short	---	Small	Spindle	---
LOIN	Saddle	Low	Easy	Roached	Narrow	Flat
RIB	Shallow	---	Tight	---	Slabby	---
FLANK	Heavy	Flat	Tucked	---	Shallow	---
F UDDER	---	Meaty	Spread	Swollen	Short	---
R UDDER	Forward	Low	Pinched	---	Narrow	---
TEATS	---	Short	---	Pointed	Long	---
HIPS	Close	Low	---	---	---	---
THURLS	---	---	Narrow	---	---	Square
PINS	Patchy	---	Close	---	Narrow	Droopy
TAILHEAD	Forward	Cocky	High	---	---	Flat
HOCKS	Heavy	---	Close	Sick	Narrow	Open
PASTERNS	---	Down	---	Swollen	Stiff	Small
FEET	---	---	Shallow	Pointed	Uneven	Spread