

QUALITIES OF A GOOD DAIRY COW

#1 DAIRY

Ample will to milk. Fast milk let down. More milk for size.

#2 TALL

High udder for easy care and modern milking. Faster growth.

#3 OPEN

Room for the udder. Added calving ease. Long breeding life.

#4 STRONG

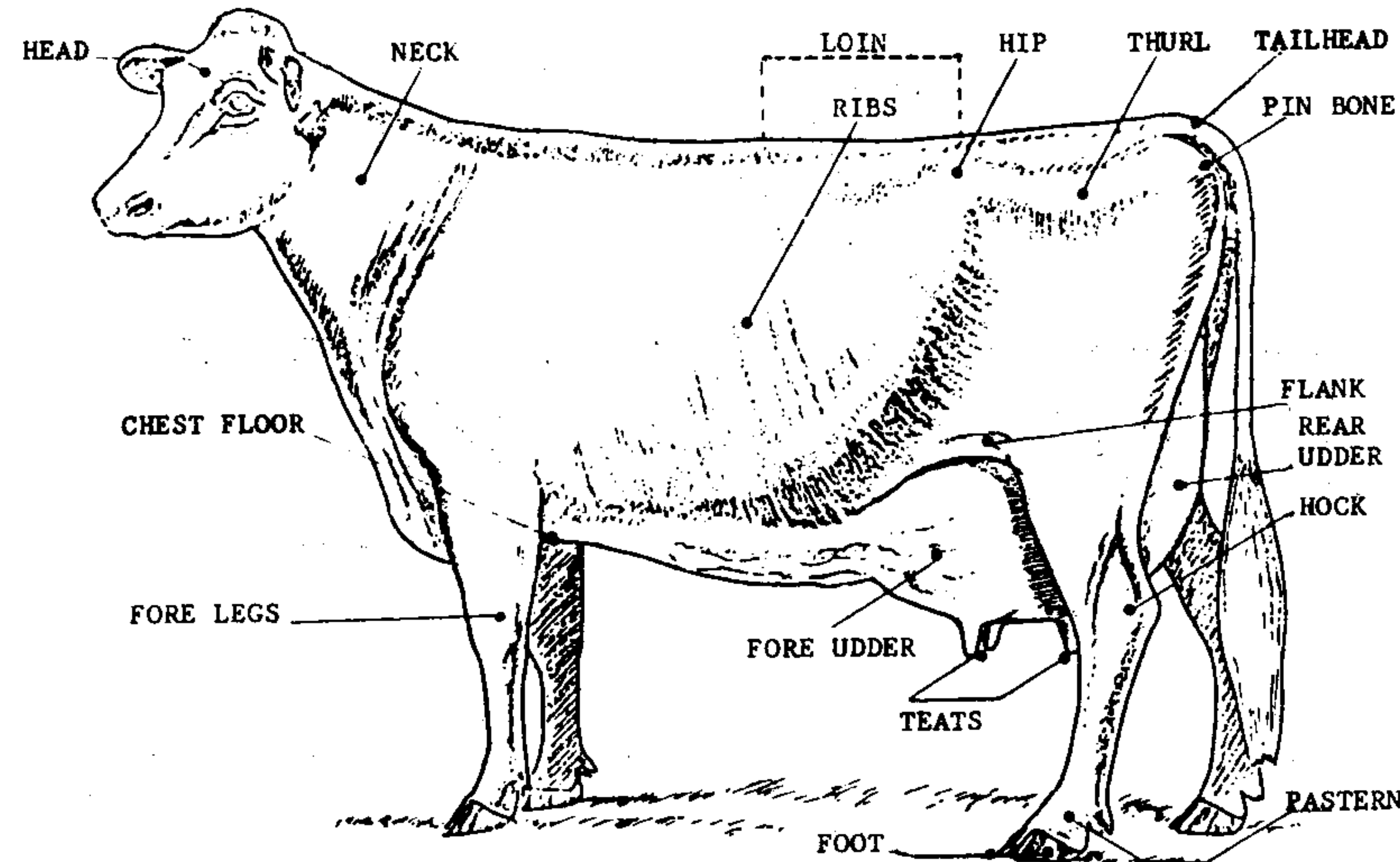
Healthy udder, feet and legs and lungs. Larger mature size.

#5 SMOOTH

Easy milking. Less injury to teats and legs. More appetite.

#6 STYLE

Less foot trimming. More sale and show value and pleasure.



HEAD - feminine, of medium length, broad muzzle, strong jaw, open nostrils, bright eyes NECK - long and lean FORELEGS - straight, long, strong, wide apart, squarely set CHEST - well sprung, long fore ribs, wide chest floor LOIN - strong, wide and nearly level RIBS - wide, flat, long, well sprung FLANK - refined, arched and deep FORE UDDER - strong attachment, moderate length, pliable and elastic REAR UDDER - moderate depth, symmetrical with high and wide rear attachment TEATS - plumb, squarely placed, well apart, of convenient form, length and size HIPS - wide apart and level with back THURLS - wide apart, close to center between hip and pin bone PINS - wide apart, well defined, slightly lower than hips TAILHEAD - set neatly above and between pin bones HOCKS - cleanly molded, well defined tendons, large, flat, flinty bone PASTERNS - strong, springy and large with medium length FEET - short, well rounded, even and uniform with deep heel and level sole.



#1
DAIRY



#2
TALL



#3
OPEN



#4
STRONG



#5
SMOOTH



#6
STYLE

aAa ANALYSIS NUMBERS HELP PREVENT THE PROBLEMS BELOW:

	1	2	3	4	5	6	
HEAD	Bully	Short		Small	Narrow	Plain	HEAD
NECK	Short	Thick				U Neck	NECK
FORELEGS	Buckled	Short		Small	Spindle		FORELEGS
CHEST				Shallow	Narrow		CHEST
LOIN	Saddle	Low	Easy	Roached	Narrow	Flat	LOIN
RIBS	Shallow		Tight		Slabby		RIBS
FLANK	Heavy	Flat	Tucked		Shallow		FLANK
F UDDER		Meaty	Spread	Swollen	Short		F UDDER
R UDDER	Forward	Low	Pinched		Narrow		R UDDER
TEATS		Short		Pointed	Long		TEATS
HIPS	Close	Low					HIPS
THURLS			Narrow			Square	THURLS
PINS	Patchy		Close		Narrow	Droopy	PINS
TAILHEAD	Forward	Cocky	High			Flat	TAILHEAD
HOCKS	Heavy		Close	Sick	Narrow	Open	HOCKS
PASTERNS		Down		Swollen	Stiff	Small	PASTERNS
FEET			Shallow	Pointed	Uneven	Spread	FEET